

Creating Multiple Test Cases

The following methods are used to add more test cases to an existing test.

- Recording a test case
- Setting a test case from existing sessions
- Cloning a test case
- Importing a test case from another test
- Setting a Test Case from a .saz or .har session file or [JMeter result file](#).

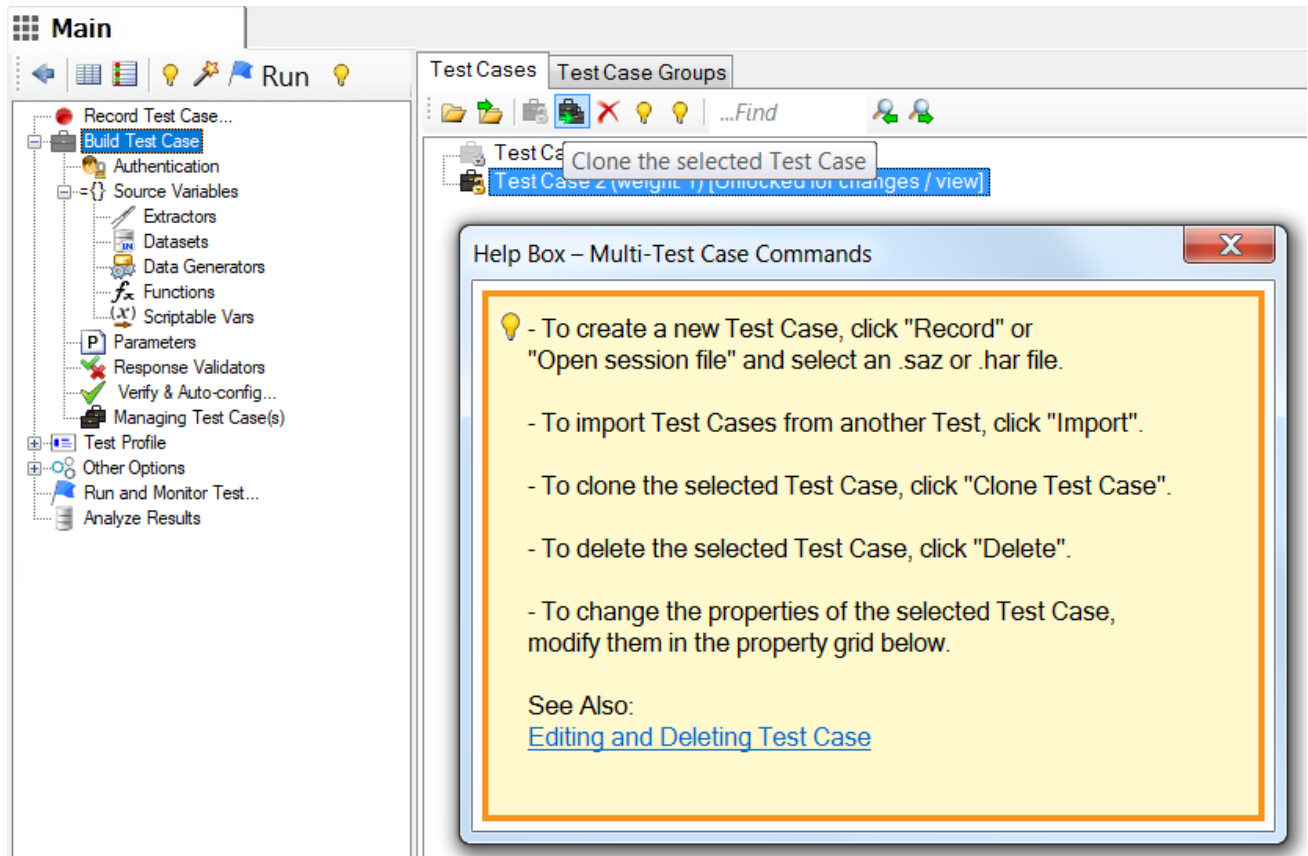
Recording a Test Case

Adding additional test cases to a test is done the same way as creating the first one. First, you can record a test case or set existing sessions as a test case as described in [Recording Test Case](#).

Select the **Add Test Case** option to create another test case.

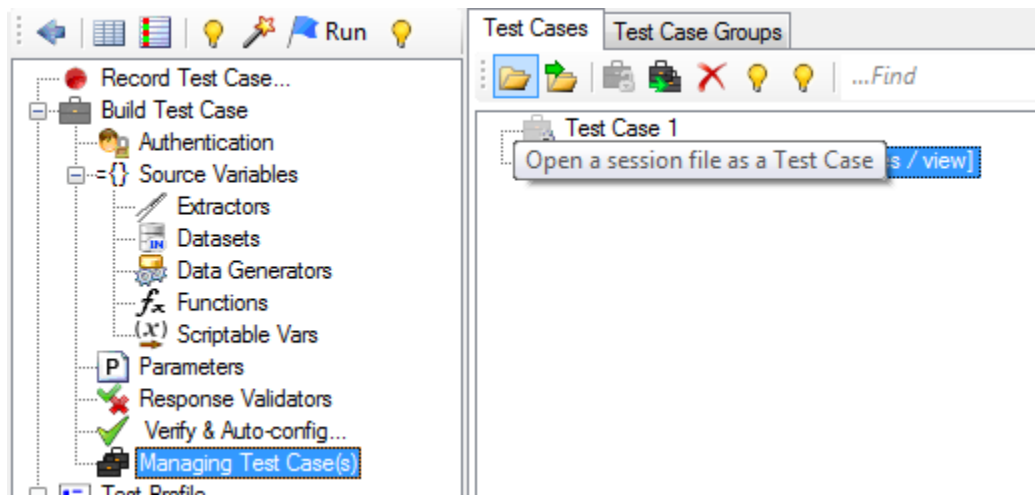
Cloning a Test Case

To clone a selected test case, in the **Managing Test Case(s)** section, click the **Clone Test Case** on the toolbar. All sessions and test case objects will be duplicated.



Setting a Test Case from a Session File

Click **Open a session file as a Test Case** and select a Fiddler file (.saz, HTTP archive file (.har) or [JMeter result file](#). The selected file will be imported as a new Test Case.



Tip: You verify any test case without leaving the context of the current test case that you are working with by right-clicking on the test case and selecting **Verify Test Case...**