

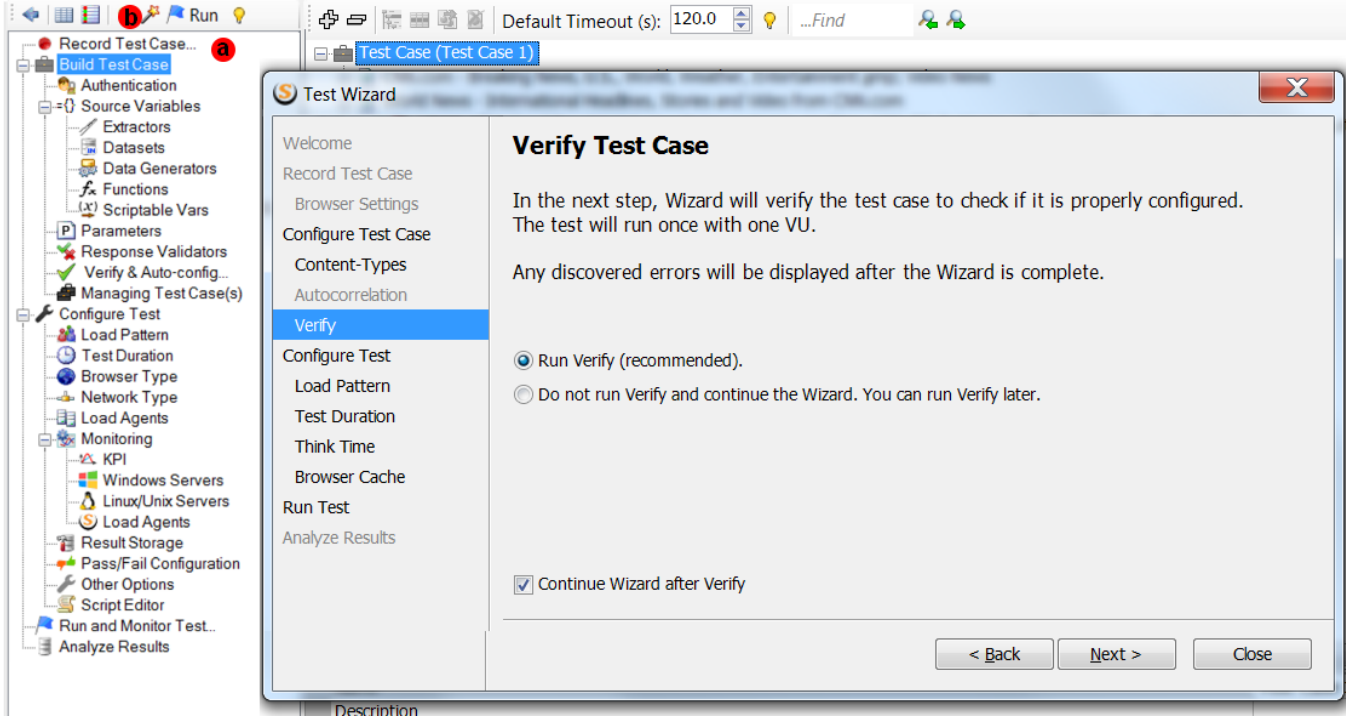
Test-Wizard

The Test Wizard is a helpful tool for an easy jump-start with StresStimulus. It guides a user through all major steps of recording, configuring, running a test, and presenting some significant results. The Test Wizard allows completing a single load test with minimal or no knowledge of performance testing or StresStimulus.

To launch the test wizard, click **Record Test Case** on the Workflow Tree (a) or click **Test Wizard** (b) on the toolbar.

Additionally, the Test Wizard has the following benefits:

- 1. Expediting StresStimulus learning.** While navigating through the Test Wizard steps, the corresponding areas of the UI are highlighted to indicate how to execute the same step without the wizard. That simplifies StresStimulus adoption.



- 2. Customizing the level of detail in the wizard.** Initially, the wizard will guide you through all relevant configuration steps. You have the option to skip certain wizard steps by selecting **Do not show...** For example, you can skip configuring the target hosts list. The wizard will remember your selection to skip the step next time.

- 3. Manual selecting wizard steps.** The left wizard pane displays a step menu showing the sequence of configuration steps. Typically a user will navigate through steps sequentially by clicking **Next**. However, you can also click on the available step to change the normal execution sequence to skip certain steps or to run a specific step. Unavailable steps are disabled. For example, if the autocorrelation step was already completed automatically,