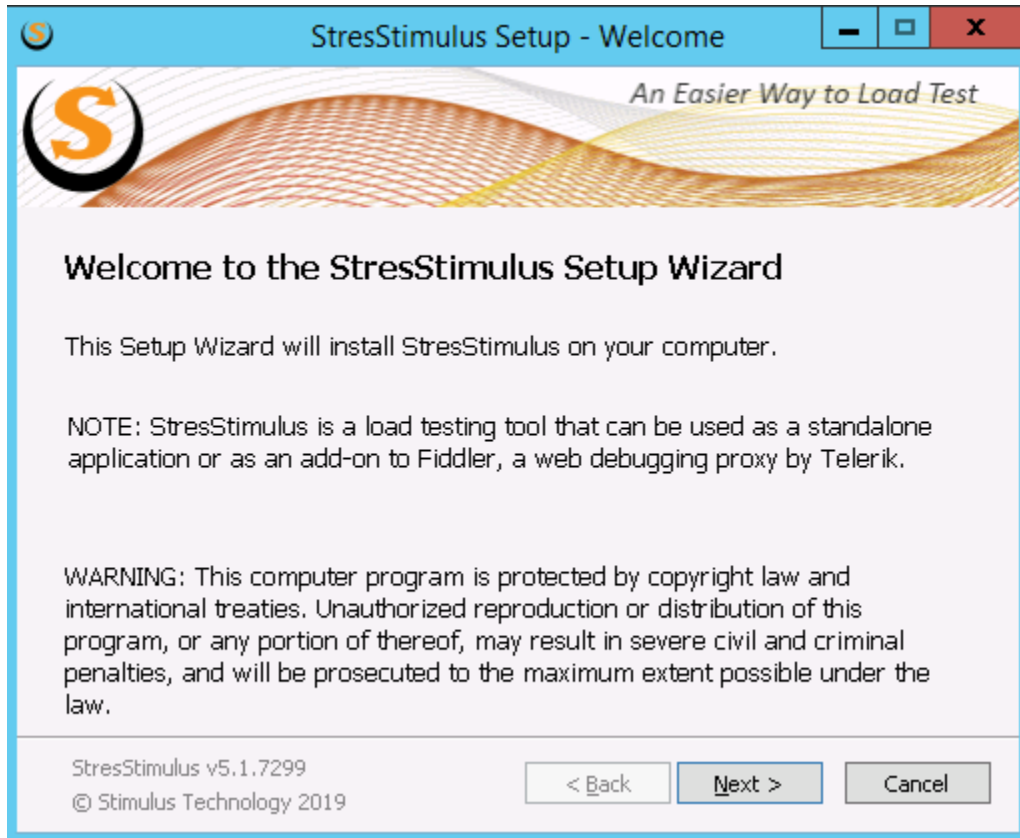


# Installation

StresStimulus has one installer for standalone and Fiddler add-on versions. To start, download the installer from our website [here](#) and double-click to launch it.

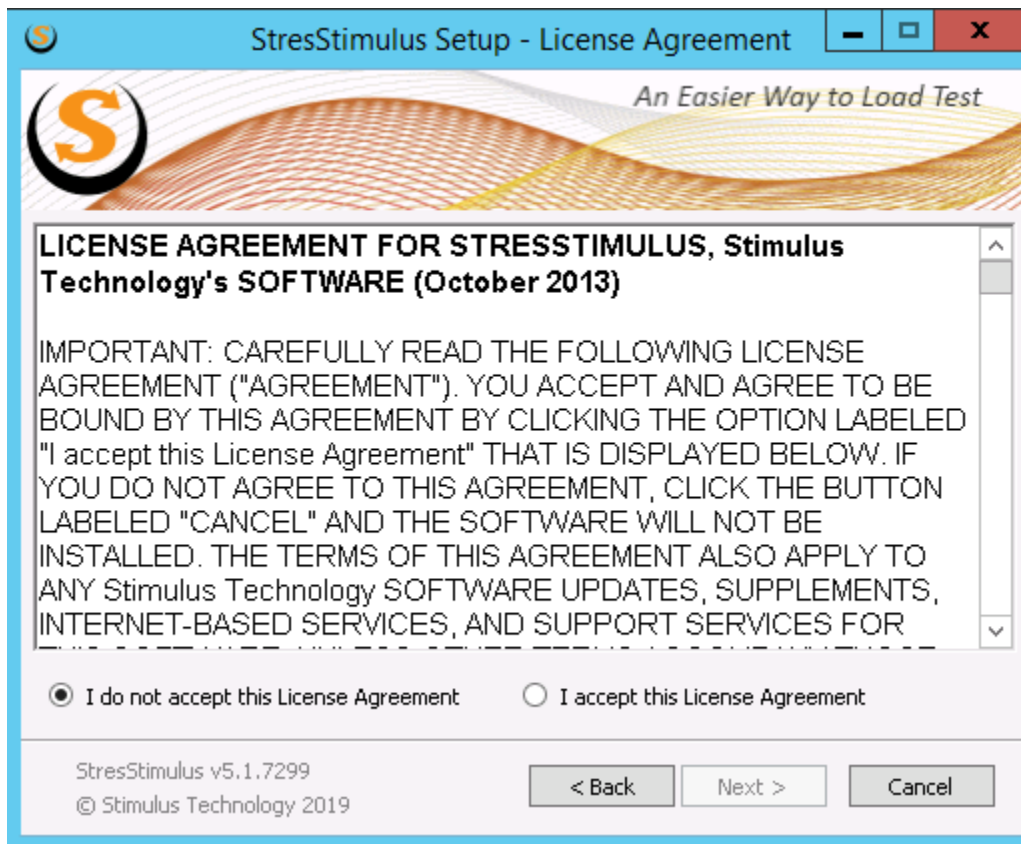
## Welcome screen

At the welcome screen, click Next to start the installation wizard.



## License Agreement

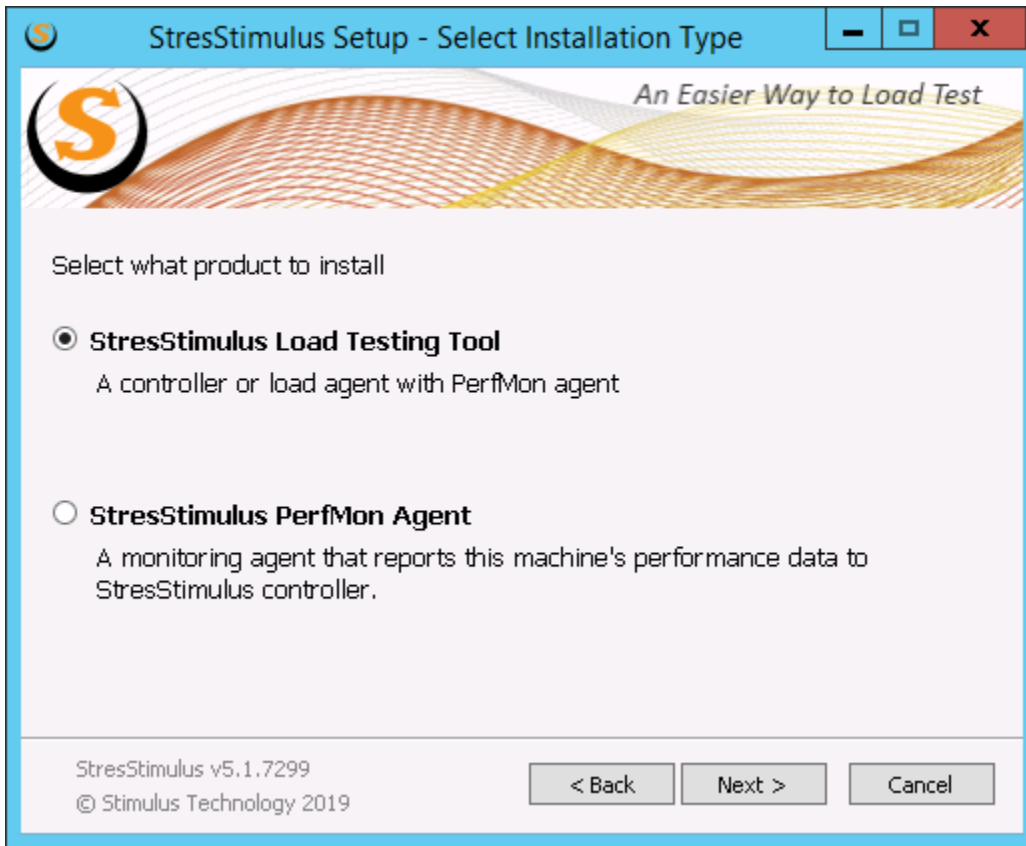
Once you accept the license agreement select the accept radio button and click Next



## Installation Type

Select the product you want to install and click Next

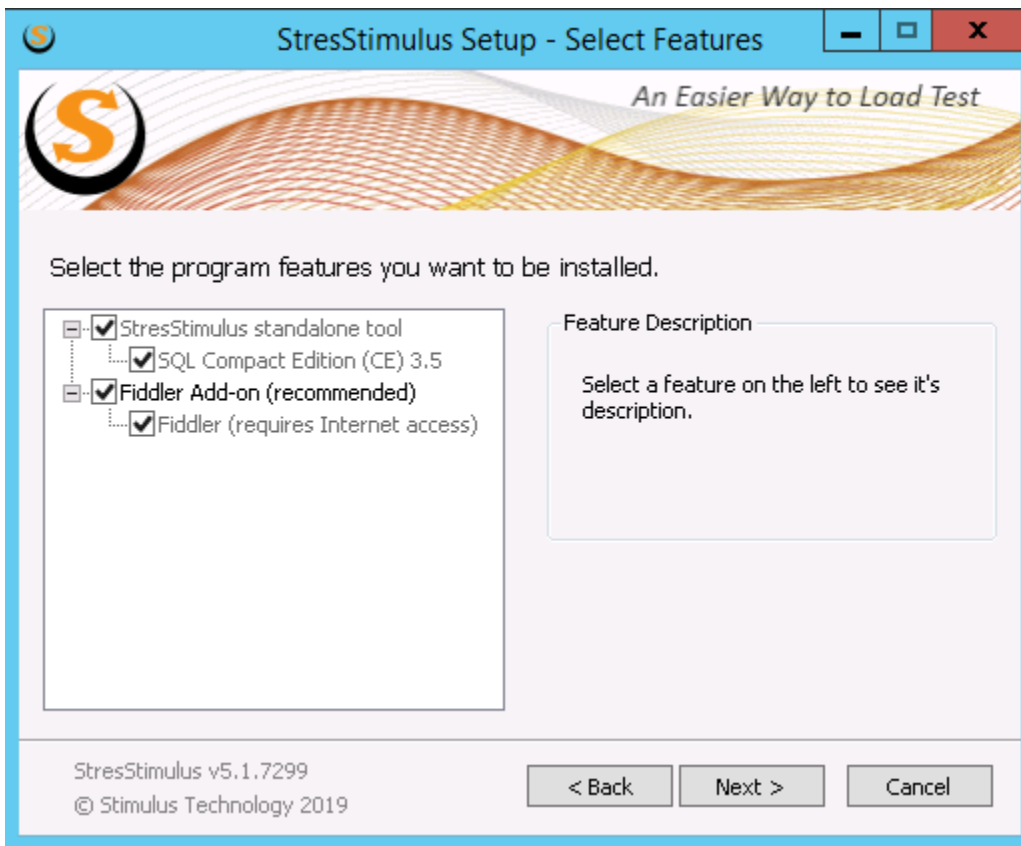
- **StresStimulus Load Testing Tool** includes standalone and Fiddler versions, plus the PerfMon agent
- **StresStimulus PerMonAgent** is the [PerfMon agent](#) only. Use this option if installing on a server you wish to monitor.



## Features to install

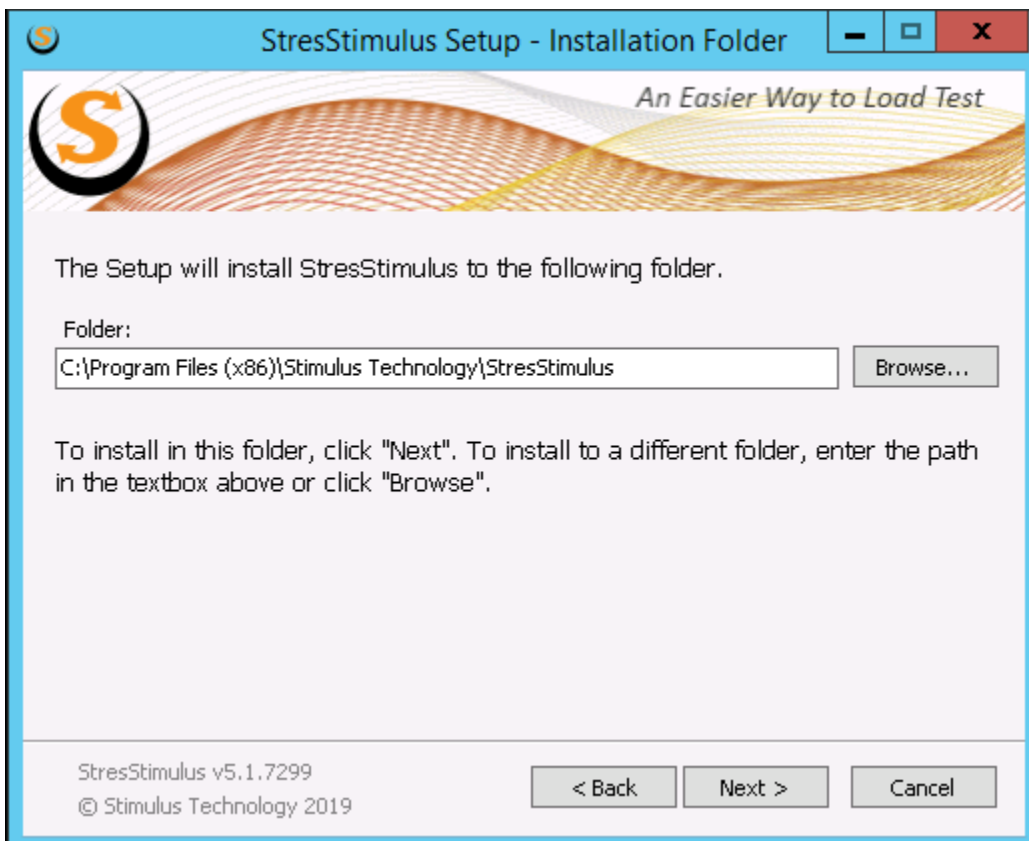
Select features you wish to install

- **StresStimulus standalone tool.** Installs StresStimulus standalone tool. This feature can't be unchecked.
  - **SQL Compact Edition (CE) 3.5.** Installs SQL CE v3.5. If already installed, this feature will not be on the list. This feature can't be unchecked.
- **Fiddler Add-on.** Installs StresStimulus Fiddler add-on. This is optional but recommended.
  - **Fiddler.** If Fiddler Add-on is selected and Fiddler is not installed, then this feature will install Fiddler. If Fiddler is already installed, this feature will not be on the list. This feature requires an internet connection.



## Installation Folder

Select the folder to install StresStimulus. Default is %ProgramFiles%\Stimulus Technology\StresStimulus



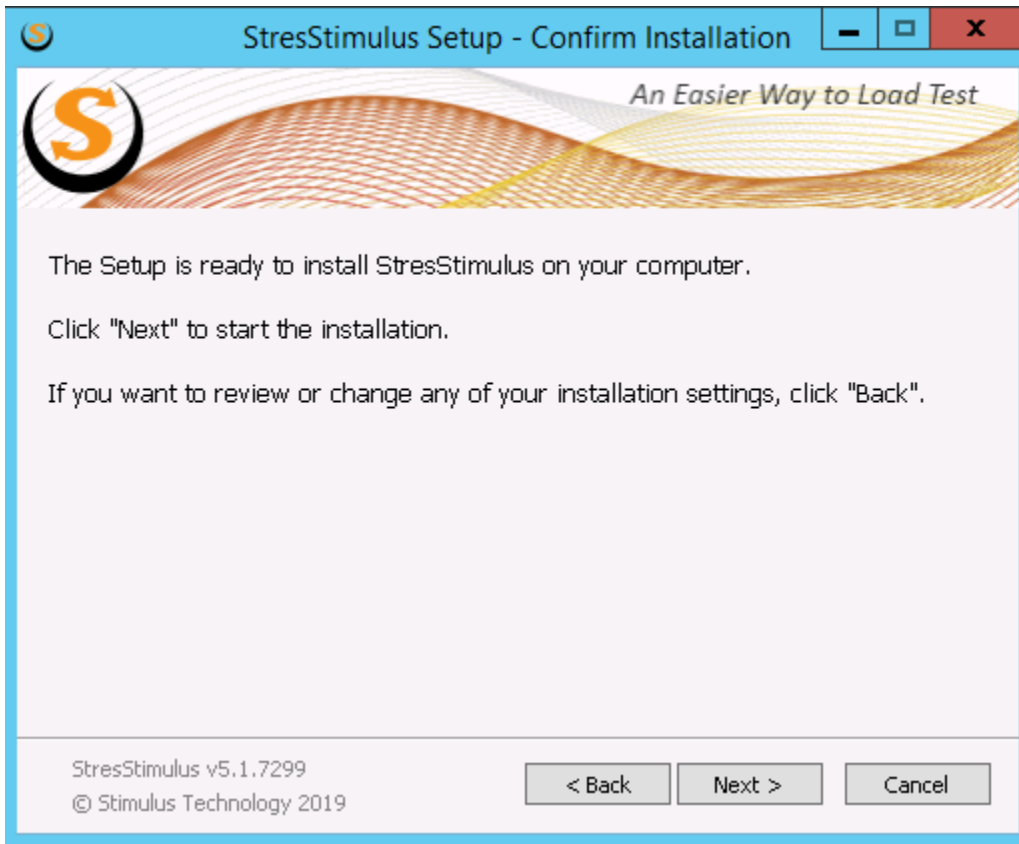
## Shortcuts

Select the start menu folder to add StresStimulus shortcuts. Also, select if you wish to add shortcuts to the desktop and quick launch toolbar



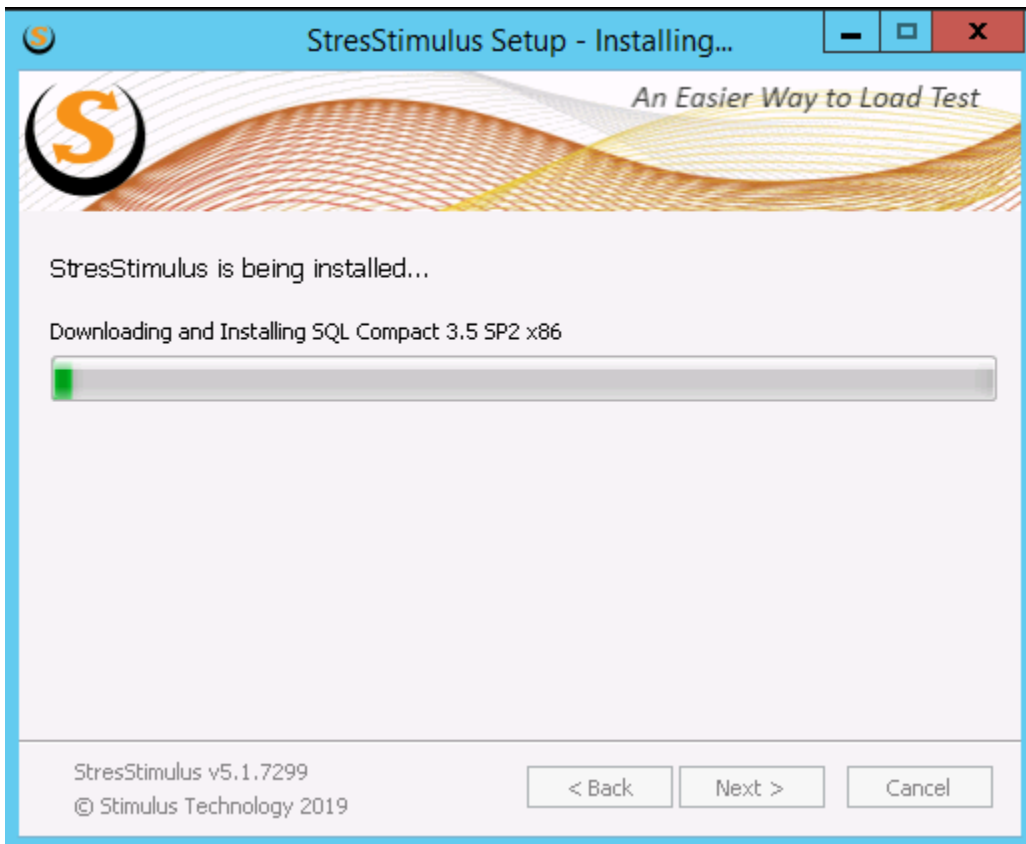
## Confirmation

Click Next to begin the installation.



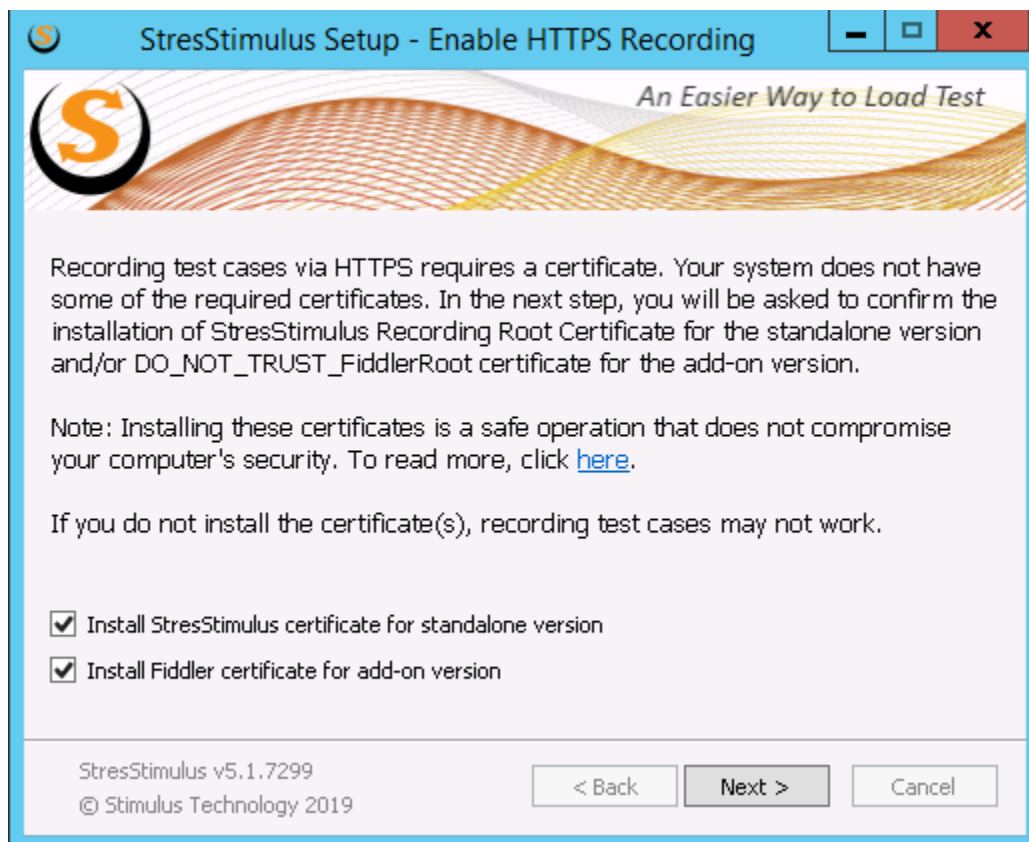
## Installing

Installation may take 1-5 minutes, depending on the features selected.



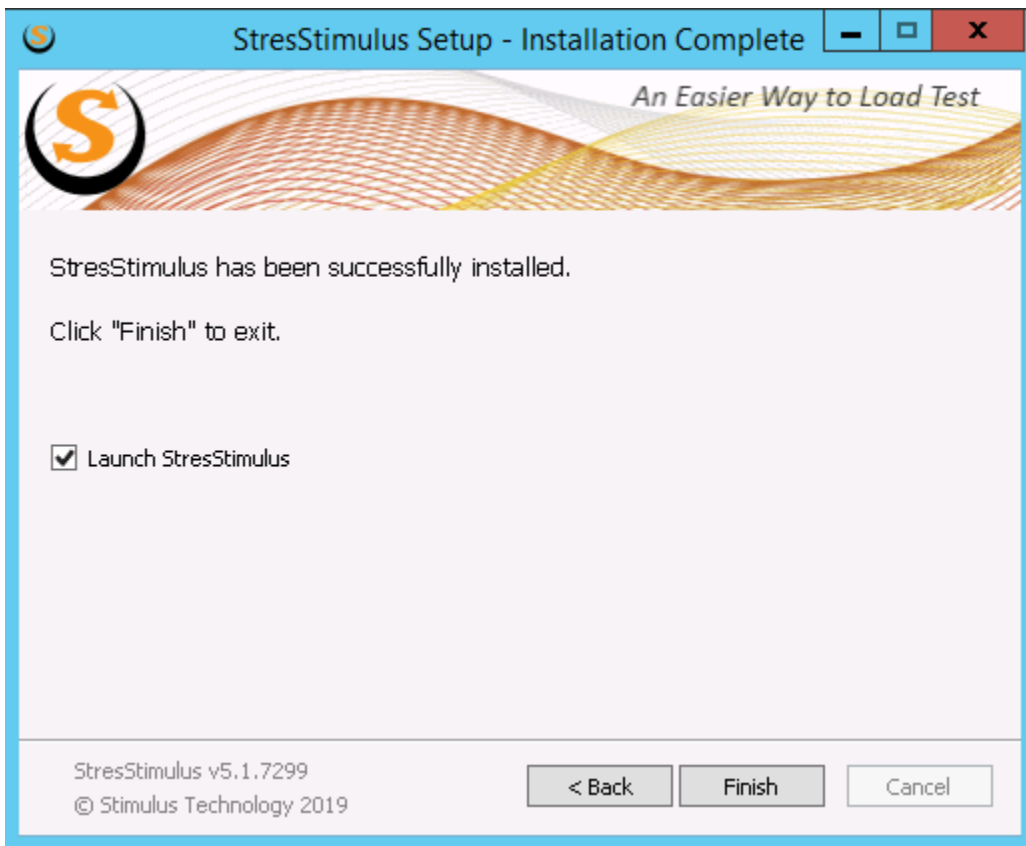
## Trusting Root Certificates

To record HTTPS traffic, StresStimulus and Fiddler root certificates must be trusted. On this screen, select which certificate to trust (StresStimulus, Fiddler, or both). Click next and follow on-screen instructions. For more on certificates see [Enabling HTTPS in Standalone Version](#) and [Enabling HTTPS in Fiddler Version](#)



## Installation complete

Once the installation is complete, check Launch StresStimulus to launch the application. Click Finish.



## Command-line switches

To use command-line switches, download the cmd installer [here](#).

```
StresStimulusInstaller.exe [-n | -i | -u | /?] [/q] [/agent]
```

**-n**: Run the installer to install StresStimulus (Default).

**-i**: Run the installer to update existing StresStimulus installation with existing settings. If StresStimulus is not installed, then -n flag is used.

**-u**: Run the installer to remove existing StresStimulus installation. If StresStimulus is not installed, then -n flag is used.

**/q**: Run the installer in quiet mode (silent installation). If running with -n flag, all default settings will be applied.

**/agent**: After the installer is complete, start StresStimulus as a Windows Service agent. Only compatible with -n and /q flags

**/?**: Outputs the command line switch help.

### See also:

[Unattended Installation](#)