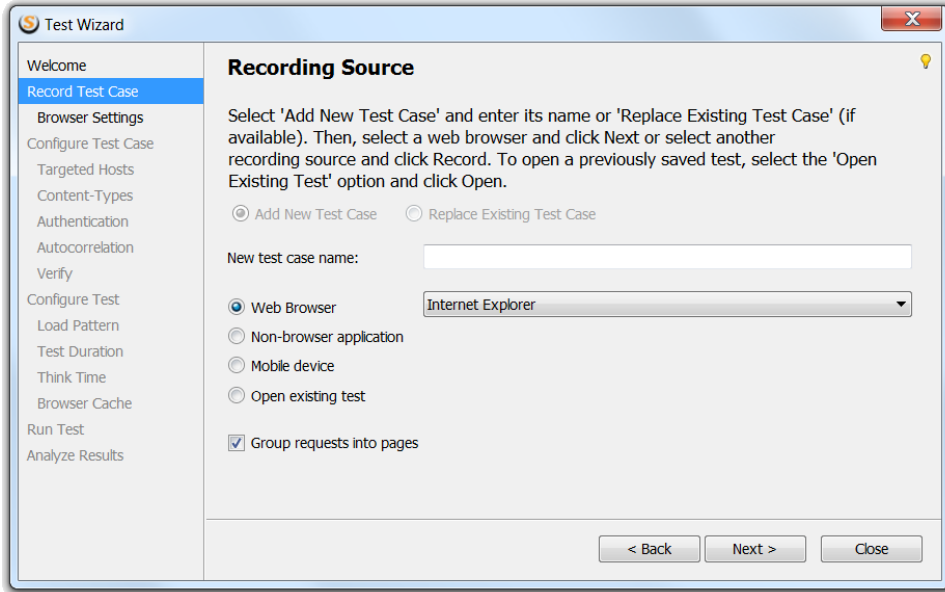


# Recording Test Case

The first step in load testing with StressStimulus is to record a test case. A test script is automatically created by recording a user navigation scenario.

The user's requests and server responses are captured by a proxy and stored in StressStimulus as test case objects.



**Note:**  
The stand-alone version uses Fiddler's proxy. The Stand alone version uses its own proxy which can work side-by-side with the Fiddler proxy.

To start recording, click

**Record Test Case**

in the Workflow Tree.

The **Test Wizard** will display

the **Recording Sources** step.

Enter  
Test  
Case  
name  
(option  
al),  
then  
select  
a  
recordi  
ng  
source.

- To  
lo  
a  
d  
te  
st  
w  
e  
b  
si  
te  
s,  
s  
el  
e  
ct  
**W**  
**e**  
**b**  
**B**  
**r**  
**o**  
**w**  
**s**  
**e**  
,  
th  
e  
n  
fr  
o  
m  
th  
e  
dr  
o  
p-  
d  
o  
w  
n,  
s  
el  
e  
ct  
th  
e  
br  
o  
w  
s  
er  
ty  
p  
e  
a  
n  
d  
cl  
ic  
k  
**N**  
**e**  
**x**  
**t**

.  
B  
r  
o  
w  
s  
e  
r  
s  
i  
n  
s  
t  
a  
l  
l  
e  
d  
o  
n  
y  
o  
u  
r  
c  
o  
m  
p  
u  
t  
e  
r  
w  
i  
l  
l  
b  
e  
o  
n  
t  
h  
e  
l  
i  
s  
t  
.  
T  
h  
e  
f  
o  
l  
l  
o  
w  
i  
n  
g  
b  
r  
o  
w  
s  
e  
r  
s  
a  
r  
e  
s  
u  
p  
p  
o  
r  
t  
e  
d:  
I  
n  
t  
e  
r  
n  
e  
t  
E  
x  
p  
l  
o  
r  
e  
r  
,  
F  
i  
r  
e  
f  
o  
x,  
C  
h  
r  
o  
m  
e,  
O  
p

er  
a,  
S  
af  
ar  
i.

• T  
o  
l  
o  
a  
d  
t  
e  
s  
t  
o  
t  
h  
e  
r  
c  
l  
i  
e  
n  
t  
a  
p  
p  
l  
i  
c  
a  
t  
i  
o  
n  
s,  
s  
u  
c  
h  
a  
s  
S  
i  
l  
v  
e  
r  
l  
i  
g  
h  
t  
o  
r  
F  
l  
e  
x,  
s  
e  
l  
e  
c  
t  
**N**  
**o**  
**n**  
**-**  
**b**  
**r**  
**o**  
**w**  
**s**  
**e**  
**r**  
**a**  
**p**  
**p**  
**i**  
**c**  
**a**  
**t**  
**i**  
**o**  
**n**  
**s**,  
a  
n  
d  
t  
h  
e  
n  
c  
l  
i  
c  
k  
**R**  
**e**  
**c**  
**o**  
**r**  
**d**  
.

• T  
o  
l  
o  
a  
d  
d  
t  
e  
s  
t  
m  
o  
b  
i  
l  
e  
a  
p  
p  
s  
a  
c  
c  
e  
s  
s  
e  
d  
f  
r  
o  
m  
e  
x  
t  
e  
r  
n  
a  
l  
d  
e  
v  
i  
c  
e  
s,  
s  
e  
l  
e  
c  
t  
**M**  
**o**  
**b**  
**i**  
**l**  
**e**  
**d**  
**e**  
**v**  
**i**  
**c**  
**e**  
,  
t  
h  
e  
n  
c  
l  
i  
c  
k  
**R**  
**e**  
**c**  
**o**  
**r**  
**d**  
.

- T  
o  
p  
e  
n  
a  
p  
r  
e  
v  
i  
o  
u  
s  
l  
y  
s  
a  
v  
e  
d  
t  
e  
s  
t  
,  
s  
e  
l  
e  
c  
t  
t  
h  
e  
**O  
p  
e  
n  
e  
x  
i  
s  
t  
i  
n  
g  
t  
e  
s  
t**  
a  
n  
d  
c  
l  
i  
c  
k  
**O  
p  
e  
n**
- B  
y  
d  
e  
f  
a  
u  
l  
t  
S  
t  
r  
e  
s  
S  
t  
i  
m  
u  
l  
u  
s  
b  
r  
e  
a  
k  
s  
d  
o  
w  
n  
r  
e  
q  
u  
e



st  
s  
in  
to  
p  
a  
g  
e  
s.  
Y  
o  
u  
c  
a  
n  
d  
i  
s  
a  
b  
l  
e  
a  
u  
t  
o  
m  
a  
t  
i  
c  
p  
a  
g  
e  
b  
r  
e  
a  
k  
d  
o  
w  
n.  
T  
o  
d  
o  
s  
o,  
u  
n-  
c  
h  
e  
c  
k  
e  
d  
t  
h  
e  
**G**  
r  
o  
u  
p  
r  
e  
q  
u  
e  
s  
t  
s  
i  
n  
t  
o  
p  
a  
g  
e  
s

b  
o  
x.  
T  
h  
i  
s  
c  
a  
n  
b  
e  
h  
e  
l  
p  
f  
u  
l  
w  
h  
e  
n,  
i  
n  
s  
t  
e  
a  
d  
o  
f  
t  
r  
a  
c  
k  
i  
n  
g  
t  
h  
e  
p  
e  
r  
f  
o  
r  
m  
a  
n  
c  
e  
o  
f  
p  
a  
g  
e  
s,  
y  
o  
u  
p  
r  
e  
f  
e  
r  
t  
o  
t  
r  
a  
c  
k  
p  
e  
r  
f  
o  
r  
m  
a  
n  
c  
e  
o  
f  
t  
r  
a  
n  
s  
a  
c  
t  
i  
o  
n  
s  
w

hi  
c  
h  
a  
r  
e  
u  
s  
e  
d  
to  
gr  
o  
u  
p  
re  
q  
u  
e  
st  
s  
m  
a  
n  
u  
al  
ly  
. Dis  
a  
bl  
in  
g  
p  
a  
g  
e  
s  
is  
al  
s  
o  
h  
el  
p  
ul  
w  
h  
e  
n  
te  
st  
in  
g  
W  
e  
b  
s  
er  
vi  
c  
e  
s.

[Recording with Web Browser](#)

[Recording from Other Sources](#)

[Creating Transactions](#)

[Recording HTTPS](#)

[Troubleshooting Recording](#)