

AutoCorrelation

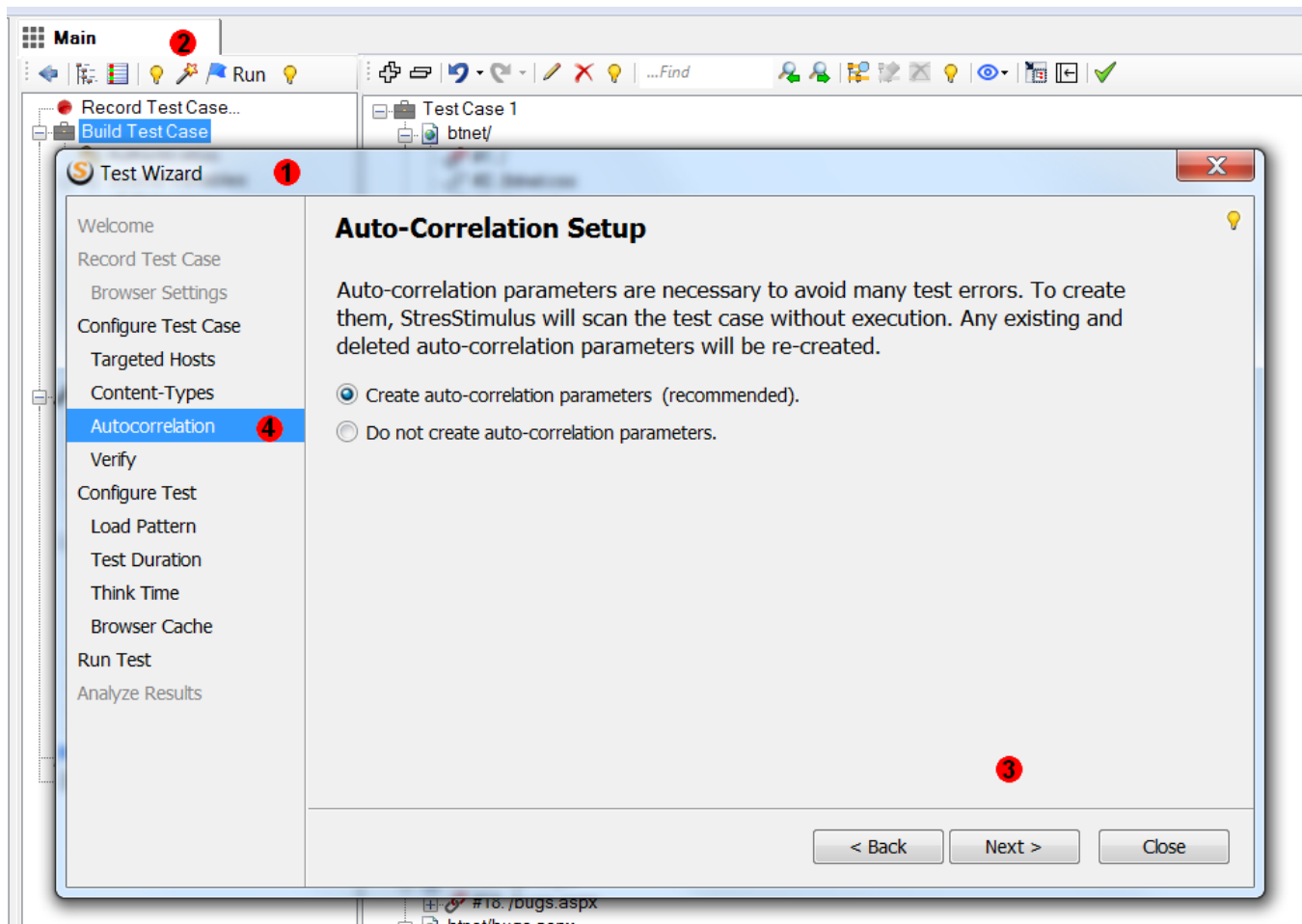
In StresStimulus, the majority of dynamic parameters are found and correlated automatically. Autocorrelation finds hidden dynamic parameters in the query string, body, header, or restless URL in all web application platforms, including binary or XML messages. In simple and medium tests cases, typically, the entire parameterization is configured automatically.

Autocorrelation runs automatically in the test wizard (1) after the test case recording. The autocorrelation progress bar displays the number of created parameters.

It may be necessary to rerun autocorrelation manually after the following changes in the test case:

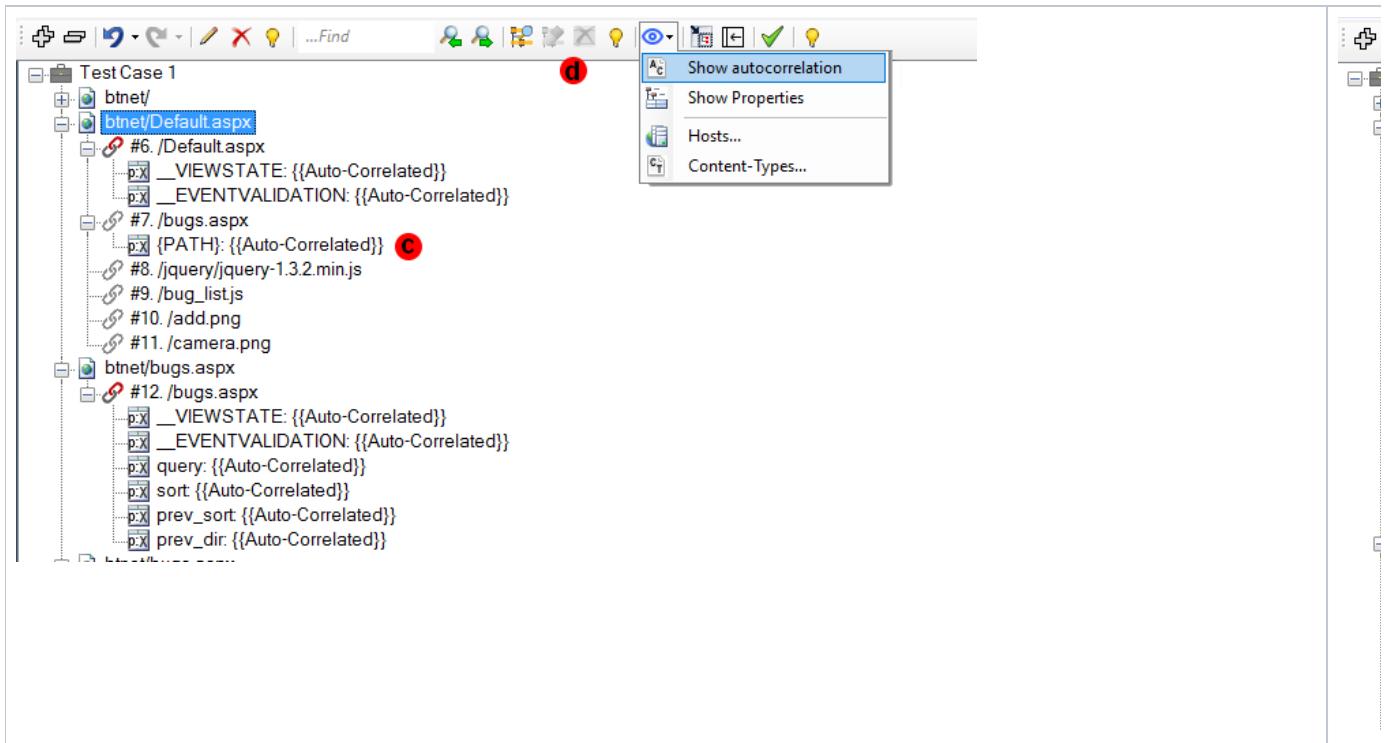
- sessions are deleted, repositioned, or more sessions are added
- the property **MIME Types requested sequentially** in Other Options -> Advanced Options was changed (for more see [Request Concurrency](#))

To re-run autocorrelation manually, click **Test Wizard** (2) on the **Workflow Tree** toolbar, then click **Next** (3) one or several times until you execute the **Auto correlation** step (4).



Autocorrelation transparency. Autocorrelation script is available for review. An autocorrelation parameter consists of an autocorrelation extractor (a) and a parameter (b). By default, the extractor is hidden, and the parameter is marked as `{{Autocorrelated}}` (c)

To display the hidden details, click **Show autocorrelation parameters details** (d) on the test case tree toolbar. The extractors will un-hide, and their names will be displayed next to the corresponding parameters (e). To switch back to the default view, click **Hide autocorrelation parameters details** (f).



Note: Autocorrelated extractors and parameters have names that begin with underscores or dashes.

Note: In rare cases, autocorrelation can create many extractors and parameters that may slow down StresStimulus UI. In those cases, after autocorrelation finishes, a dialog will appear, asking to enable [Lean UI](#) mode.