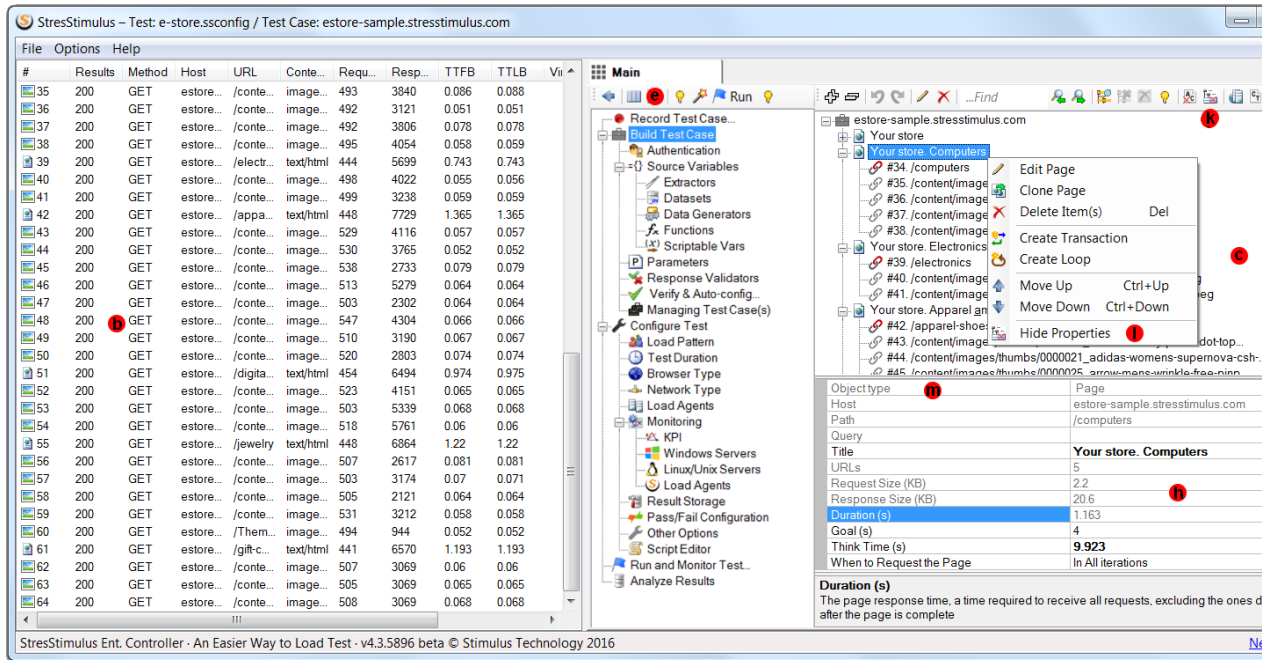
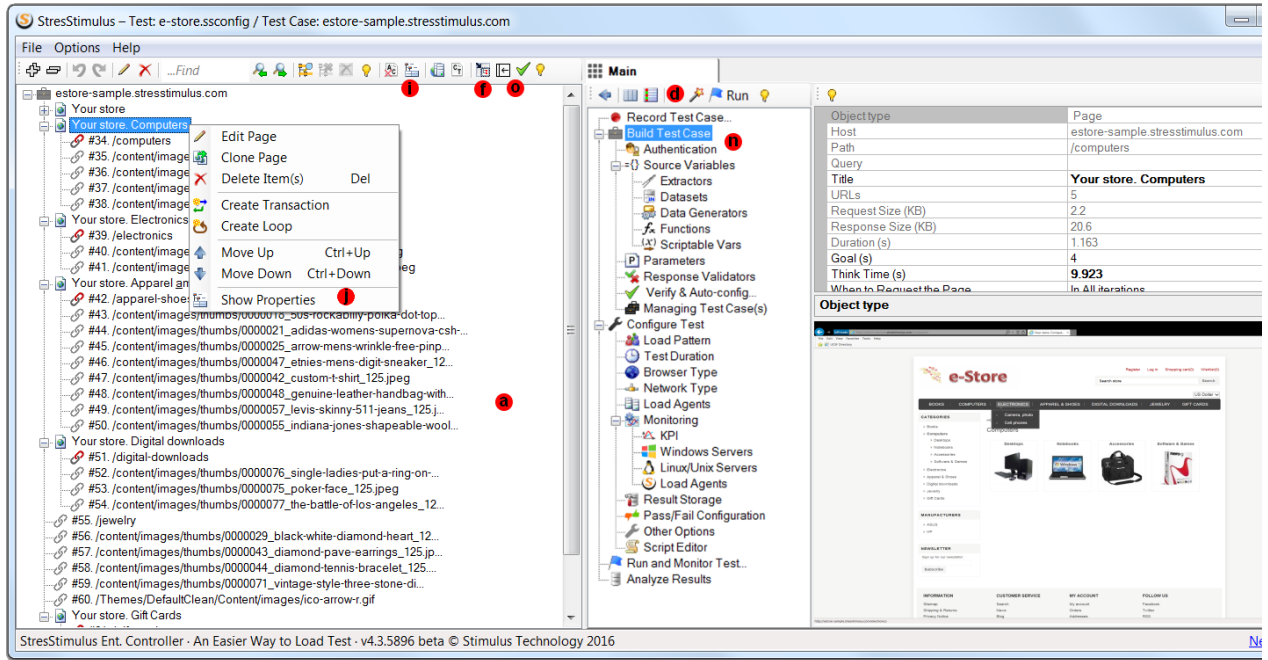


Test Case Presentation

A test case can be presented as a **Test Case Tree** (a) or a **Session Grid** (b), as shown below. Test Case Tree can be displayed on the left pane (a) or on the right pane (c)



These two presentation forms are compared in the table below. The **Test Case Tree** displays a hierarchical view of TOM with multiple object types. However, it only works with one selected object at a time. The **Session Grid** only displays sessions, but allows to sort and select multiple sessions to perform operations quicker.

Test Case Presentation Form	Test case Tree	Session Grid
View	Hierarchical	Flat
Displayed objects	All objects or Sessions	Sessions only
Sorting	No	Yes

Invoke operations	Toolbar or Context menu	Context menu
-------------------	-------------------------	--------------

After the test case is recorded, the Test Case Tree appears in the object pane (a) on the left. The following commands allow to change its presentation and location:

- To switch the Test Case view from the Tree to the Grid, click **Show Recorded Test Case Sessions In The Session Grid** (d) on the **Workflow Tree Toolbar**. This will also dock the Test Case Tree in the functional pane (c) on the right.
- To switch Test Case view back to the Tree, click the **Tree View button** (e).
- To move the tree to the right pane, click **Dock to the right** (f) on the **Toolbar** of the **Test Case Tree**.
- To move the tree to the left pane, click **Dock to the left** (g) on the **Toolbar** of the **Test Case Tree**.
- To display a property grid (h) below the tree, click **Show property grid on the bottom** (i) or right-click and select **Show Properties** in the context menu (j)
- To hide the property grid below the tree, click **Hide property grid on the bottom** (k) or right-click and select **Hide Properties** in the context menu (l).
- The property grid (h) displays properties of the selected object. The first property for all objects is **Object Type** (m)
- To display the tree and the property grid side-by-side, dock the tree on the left, then select **Build Test Case** node (n) in the workflow tree.
- To leave more screen real estate to the right panel, click **Collapse to the left** (o) on the toolbar to maximally shrink the left panel.

Tip: When selecting the request in the treeview on the right, the corresponding request in the session grid on the left gets highlighted.
See Also:



[UI Reference -> Session Grid](#)