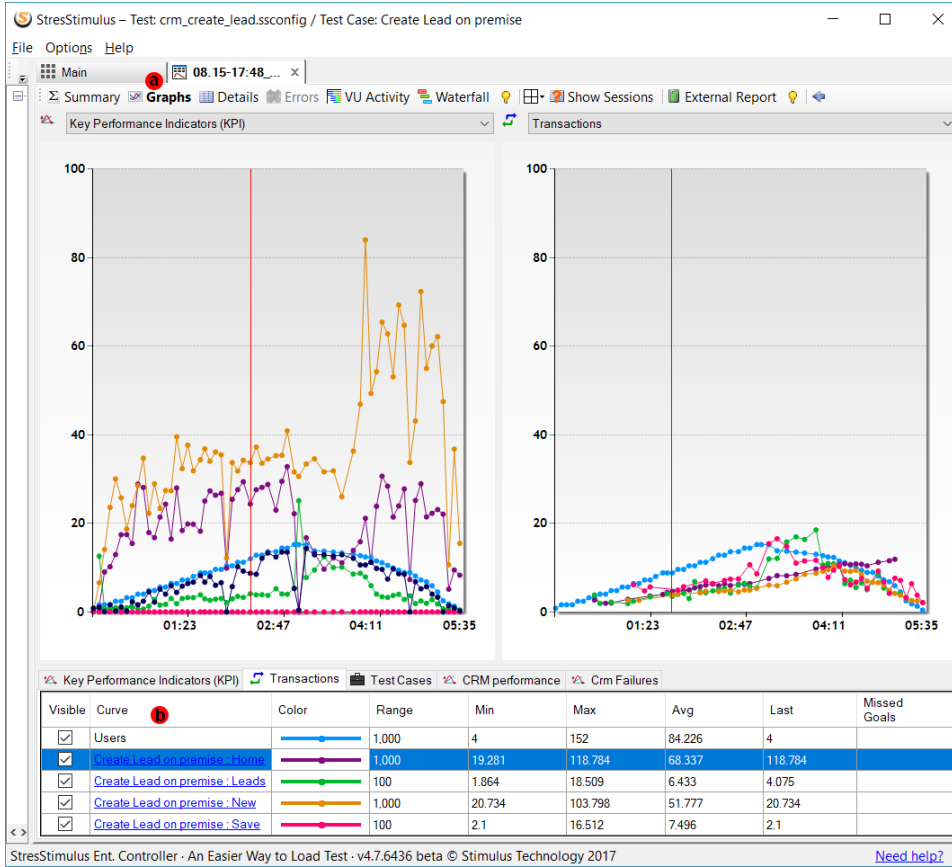


# Graph view

To select Graph View, click **Graphs** (a) on the toolbar.

Graph view includes in-depth graphs with load testing metrics demonstrating the performance of a tested website. It is similar to the Runtime Dashboard. It, however, does not include several elements such as **Test Progress Panel**, **Agents**, and **Test Cases Grid**.



- The layout of the Graph view is described in the [Layout](#) section.

- Performance graph as a ranked description in the Graphing Performance Metrics section.

- Graph commands are described in the [Graph Command section](#).

**Note:** Customization changes made in the Graph View will be reflected in the Load Test report.

- Curved grid data

h  
o  
w  
n  
b  
e  
l  
o  
w  
t  
h  
e  
g  
r  
a  
p  
h  
s  
i  
s  
d  
e  
s  
c  
r  
i  
b  
e  
d  
i  
n  
t  
h  
e  
M  
o  
n  
i  
t  
o  
r  
i  
n  
g  
P  
e  
r  
f  
o  
r  
m  
a  
n  
c  
e  
s  
e  
c  
t  
i  
o  
n  
. T  
h  
e  
f  
i  
n  
a  
l  
s  
n  
a  
p  
s  
h  
o  
t  
o  
f  
t  
h  
e  
c  
u  
r  
v  
e  
s'  
d  
a  
t

a  
t  
a  
k  
e  
n  
a  
t  
t  
h  
e  
t  
e  
s  
t  
c  
o  
m  
p  
l  
e  
t  
i  
o  
n  
i  
s  
d  
i  
s  
p  
l  
a  
y  
e  
d  
.  
C  
u  
r  
v  
e  
g  
r  
i  
d  
s  
c  
a  
n  
b  
e  
s  
o  
r  
t  
e  
d  
b  
y  
c  
l  
i  
c  
k  
i  
n  
g  
c  
o  
l  
u  
m  
n  
h  
e  
a  
d  
i  
n  
g  
s  
(  
b)

**Note:**  
There  
will  
be  
some  
discre  
pancie

s  
betwe  
en  
the  
values  
on  
the  
curve  
grids  
and  
the  
corres  
pondin  
g  
values  
in the  
page  
and  
transa  
ction  
detaile  
d  
view.  
The  
Min,  
Max,  
and  
Avg  
values  
on  
the  
curve  
grids  
are  
aggre  
gation  
s of  
the  
datap  
oints  
collect  
ed  
during  
the  
test  
run.  
The  
datap  
oints  
are  
the  
avera  
ge  
values  
during  
the  
check  
point  
interva  
ls.  
Such  
metric  
s are  
primar  
ily  
collect  
ed for  
monito  
ring  
test  
progre  
ss  
and  
prese  
nting  
the  
perfor  
mance  
in

real-time without waiting for the final results. In contrast, the Min, Max, and Avg values on the detail views are an aggregation of the actual measurements of every occurrence of the parameter. The detailed data is calculated after the test is complete and cannot be accessed during the test run, but presents a complete performance picture.



You can fetch load test sessions from the test log as described in [Retrieving Sessions from Graphs](#) section.