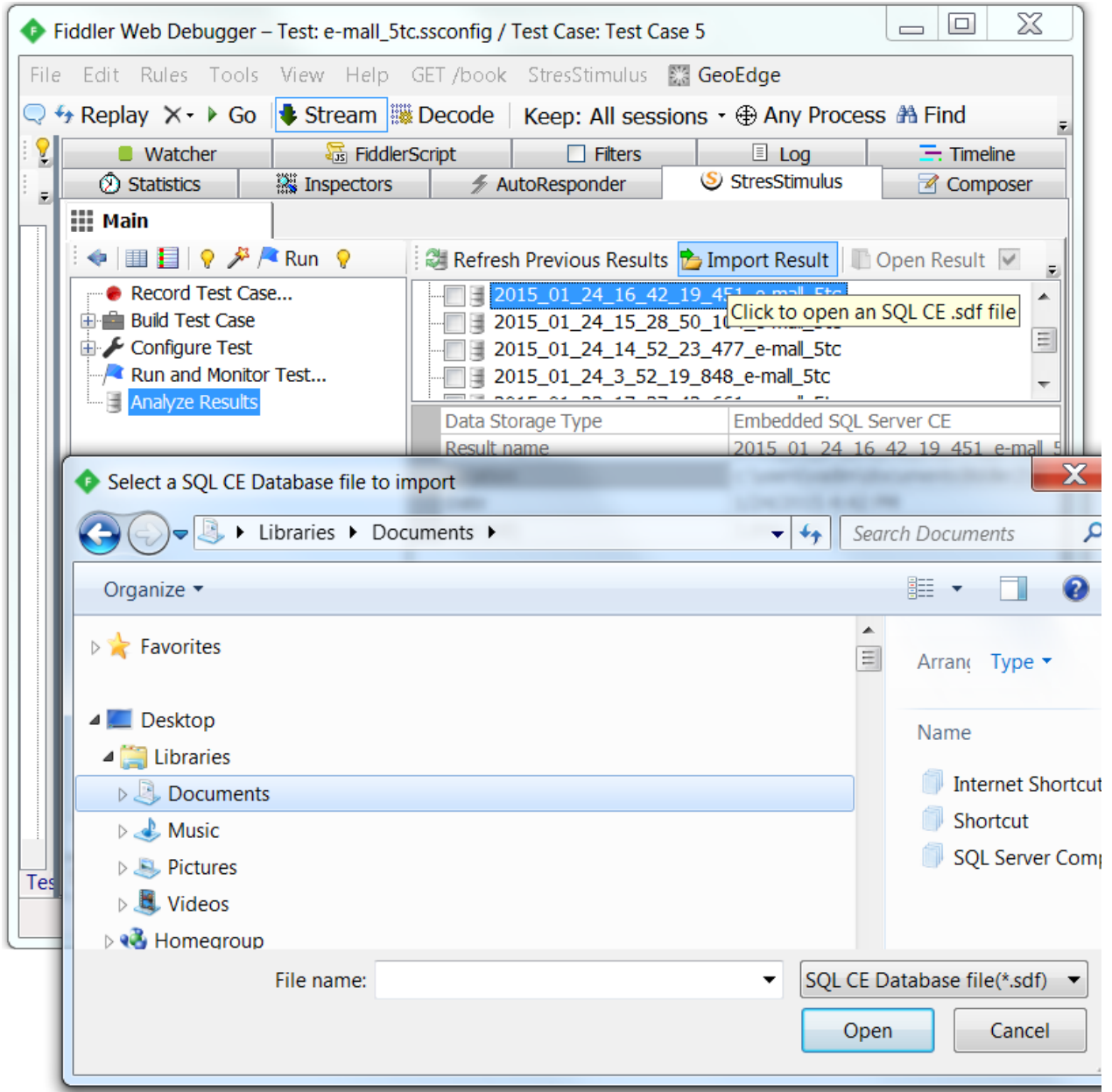


# Opening an SQL CE file

In some situations, it is necessary to open a test result without opening the entire test. For example:

- You have a test folder containing multiple test runs, but you need to share one test run result with a team member.
- You would like to open the local test result file generated on an agent.

To open a standalone test result, from the **Analyze Results** section, click **Import Result** on the toolbar



An open file dialog will appear. Navigate to a necessary folder and open a .sdf file.

After that, a standalone test result will appear in the analysis results section. Double-click it to open the test report.