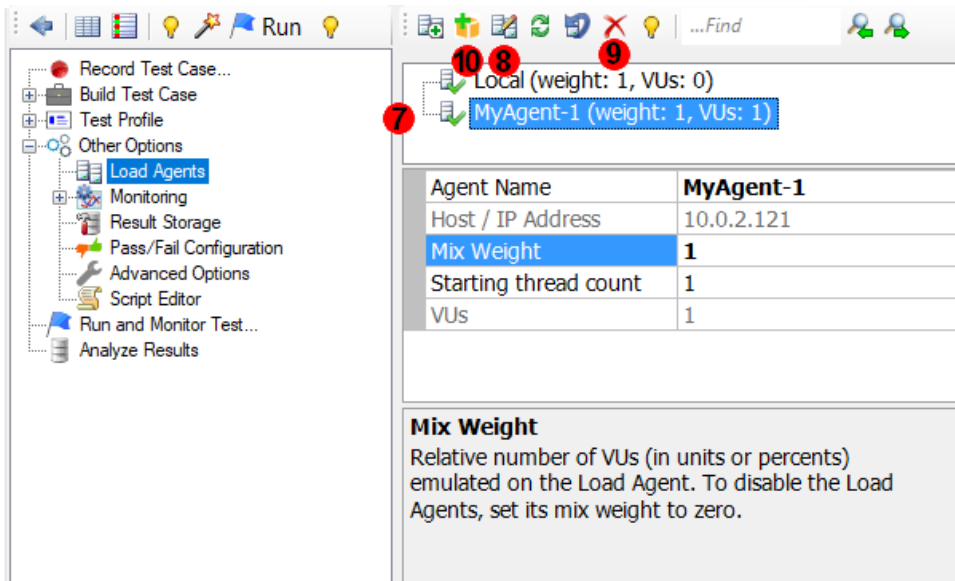
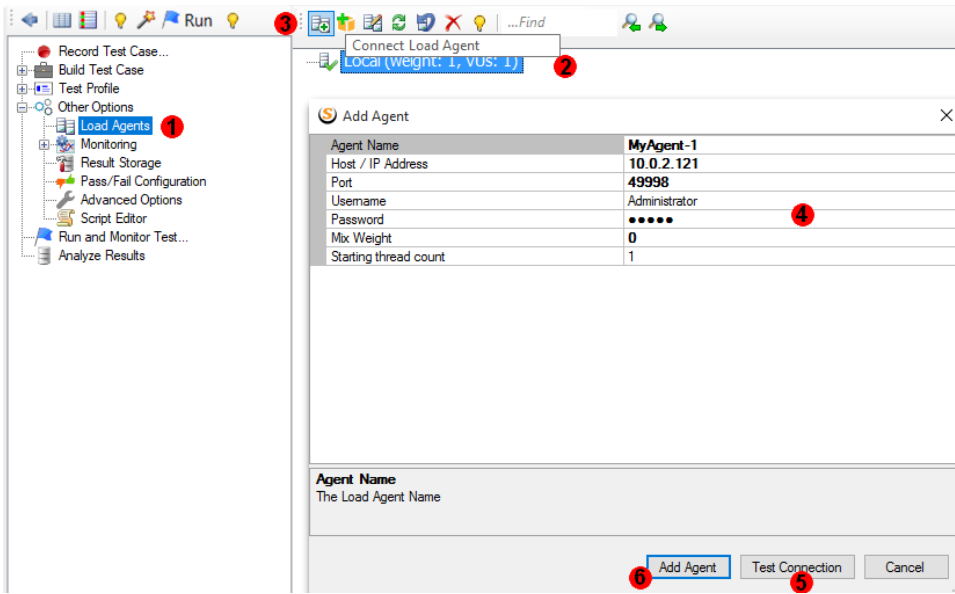


# Attaching Agents to Controller

On-Pre  
mise  
Load  
Agents



1. On the control roller, in the **Other Options** - > **Load Agents** section of the **Workflow Tree**, the grid displays agents attached to the control roller.

2. The first agent called Local is the controller by itself.

3. To attach a new agent, on the grid's toolbar, click **Connect Load Agent**.

4. Enter required connection properties: Agent Name, Host name or IP address without "/" , Port, Username, and Password

5. Click **Test Connection**. If a pop-up message indicates any connectivity issues, correct them and try again.

6. If the messages indicate that the connection is successfully verified, click **Add Agent**.

7. A new agent will appear in the list.

8. To edit the existing connection, select it on the

e  
gri  
d  
an  
d  
cli  
ck  
**E**  
**d**  
**i**  
**t**  
**S**  
**e**  
**l**  
**e**  
**c**  
**t**  
**e**  
**d**  
**L**  
**o**  
**a**  
**d**  
**A**  
**g**  
**e**  
**n**  
**t**  
**C**  
**o**  
**n**  
**n**  
**e**  
**c**  
**t**  
**i**  
**o**  
**n**  
on  
th  
e  
to  
ol  
ba  
r.  
Al  
te  
rn  
ati  
ve  
ly,  
yo  
u  
ca  
n  
rig  
ht  
-  
cli  
ck  
an  
d  
se  
le  
ct  
**E**  
**d**  
**i**  
**t**  
,  
or  
do  
ub  
le-  
cli  
ck  
on  
th  
e  
ag  
en  
t's  
na  
m  
e.  
9. T  
o  
de

let  
e  
th  
e  
ex  
ist  
in  
g  
co  
nn  
ec  
tio  
n,  
se  
le  
ct  
ed  
it  
in  
th  
e  
gri  
d  
an  
d  
cli  
ck  
**D**  
**e**  
**l**  
**e**  
**t**  
**e**  
**S**  
**e**  
**l**  
**e**  
**c**  
**t**  
**e**  
**d**  
**L**  
**o**  
**a**  
**d**  
**A**  
**g**  
**e**  
**n**  
**t**  
**C**  
**o**  
**n**  
**n**  
**e**  
**c**  
**t**  
**i**  
**o**  
**n**  
th  
e  
to  
ol  
ba  
r. Al  
te  
rn  
ati  
ve  
ly,  
yo  
u  
ca  
n  
rig  
ht  
-  
cli  
ck  
an  
d  
se  
le  
ct  
**D**



el  
ete

.  
  
**N**  
**ot**  
**e:**  
T  
o  
co  
m  
m  
un  
ic  
at  
e  
wi  
th  
th  
e  
co  
nt  
rol  
ler  
,  
th  
e  
A  
ge  
nt  
ha  
s  
a  
lis  
te  
ne  
r  
on  
T  
C  
P  
po  
rt  
49  
99  
8 (  
or  
an  
ot  
he  
r  
po  
rt  
if  
yo  
u  
ch  
an  
ge  
d  
th  
e  
de  
fa  
ult  
po  
rt  
w  
hil  
e  
[C](#)  
[on](#)  
[fig](#)  
[uri](#)  
[ng](#)  
[on](#)  
-  
[pr](#)

e  
mi  
se  
A  
ge  
nts  
) I  
f  
th  
e  
C  
on  
tr  
oll  
er  
di  
sp  
la  
ys  
a  
co  
m  
m  
un  
ic  
ati  
on  
er  
ro  
r,  
m  
ak  
e  
su  
re  
th  
at  
St  
re  
s  
St  
im  
ul  
us  
is  
ru  
nn  
in  
g  
on  
th  
e  
re  
m  
ot  
e  
co  
m  
pu  
te  
r  
in  
ag  
en  
t  
m  
od  
e,  
an  
d  
th  
at  
T  
C  
P  
po  
rt  
49  
99

8  
is  
op  
en  
ed  
on  
fir  
e  
w  
all  
s  
be  
tw  
ee  
n  
th  
e  
co  
nt  
rol  
ler  
an  
d  
ag  
en  
ts.

C  
l  
o  
u  
d  
L  
o  
a  
d  
A  
g  
e  
n  
ts

T  
o  
c  
r  
e  
a  
t  
e  
a  
c  
l  
o  
u  
d  
l  
o  
a  
d  
a  
g  
e  
n  
t  
o  
n  
t  
h  
e  
f  
l  
y  
,  
c  
l  
i  
c  
k  
**C  
r  
e  
a  
t  
e  
C  
l  
o  
u  
d  
L  
o  
a  
d  
A  
g  
e  
n  
t**  
. T  
h  
e  
n  
r  
e  
f  
e  
r  
t  
o  
[Cr  
e  
a  
t  
i  
n  
g  
A  
W  
S  
E  
C  
2  
A  
g  
e  
n  
t  
s](#)  
f  
o  
r  
A  
W  
S  
o  
r  
[Cr  
e  
a  
t  
i  
n  
g  
A  
z  
u  
r  
e  
A  
g  
e  
n  
t  
s](#)  
f  
o  
r  
A  
z  
u  
r  
e.

