

Other methods of creating Test Case

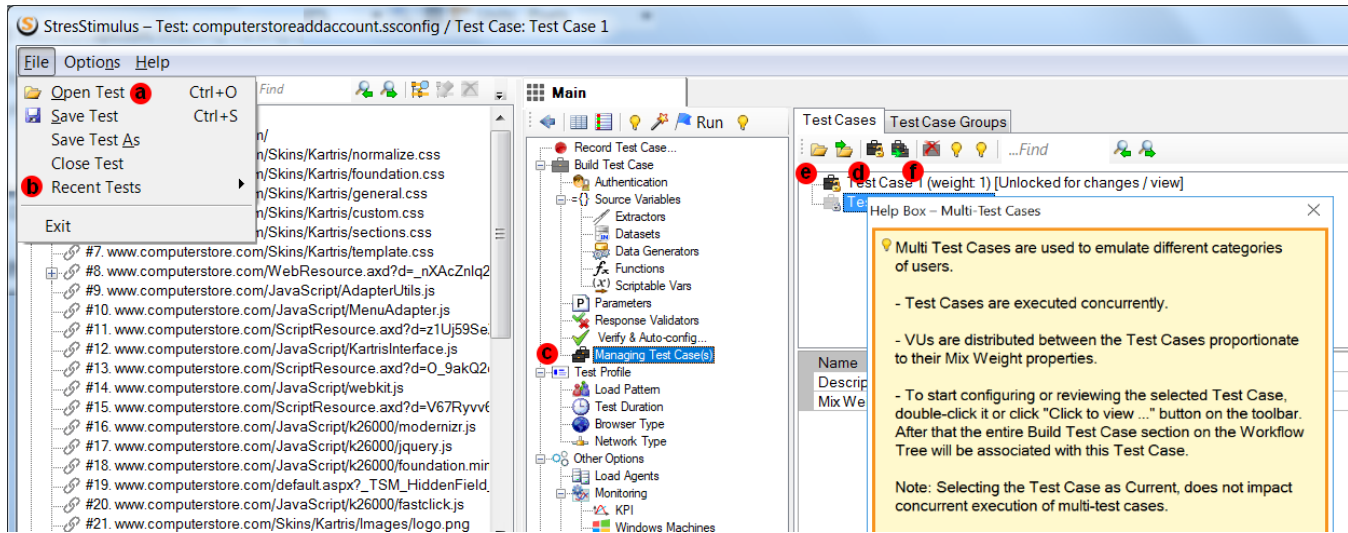
Open test

To open a previously saved Test, select **Open Test** (a) or **Recent Tests** (b) from the StresStimulus Main Menu. FROM the **Select Recording Source** step in the **Test Wizard**, select **Open Test**.

Import from another test

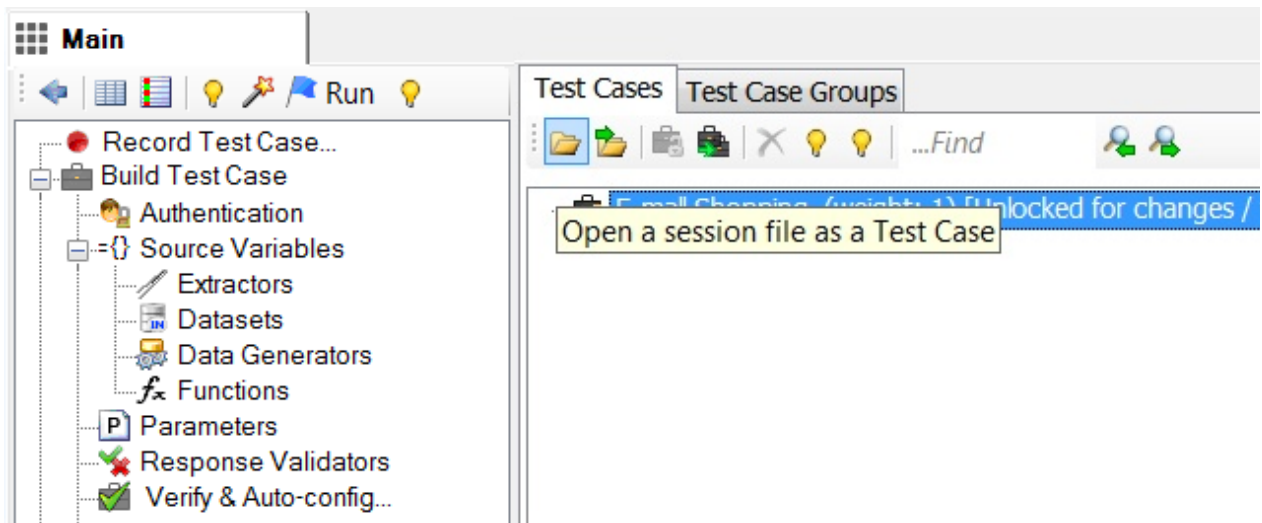
To import Test Cases from another Test, in the **Managing Test Case(s)** section (c), click **Import Test Cases From Another Test** (d) on the toolbar and then select a .ssconfig file and click **Open**. All test cases from the selected test will be imported into the current test. All test objects will be copied into the .ssconfig file of the current test, and all .saz files with sessions will be copied into the current folder.

Tip: If you need to import some, but not all test cases, after import, delete the test cases you do not need.



Import session file

To import a previously saved session file, in the **Managing Test Case(s)** section, click **Open a session file as a Test Case** and select a Fiddler file (.saz) or HTTP archive file (.har). The selected file will be imported as a new Test Case.



Clone test case

To clone the selected Test Case, in the **Managing Test Case(s)** section, click **Clone Test Case (f)** on the toolbar.

Add additional sessions to the existing or new test case

To create a test case using sessions captured in the session grid or to add to the existing test case,

1. Capture sessions in Fiddler, Load Archive, or Import Sessions into Fiddler. Or in the standalone version, use the [web API test builder](#) to create a session.
2. In the Sessions grid, select the sessions.
3. Right-click and in the context menu under **StresStimulus Commands**, click **Create Test Case** to create a new test case or **Add to Test Case** to add selected sessions to the test case.

The screenshot shows the StresStimulus Sessions grid with a context menu open. The grid has columns for #, Host, Content-Type, Result, Protocol, and URL. The context menu is divided into two parts: a standard menu and a 'StresStimulus Commands' section.

#	Host	Content-Type	Result	Protocol	URL
31	support.stresstimulus.com	application/json	200	HTTP	/rest/quickreload/latest/7864329?
			200	HTTP	/rest/mywork/latest/status/notifica
			200	HTTP	/rest/mywork/latest/status/notifica
			200	HTTP	/rest/quickreload/latest/7864329?
			200	HTTP	/rest/quickreload/latest/7274906?
			200	HTTP	/rest/quickreload/latest/7864329?
			200	HTTP	/rest/quickreload/latest/7864329?
			200	HTTP	/rest/mywork/latest/status/notifica
			200	HTTP	/rest/mywork/latest/status/notifica
			200	HTTP	/rest/quickreload/latest/7274906?
			200	HTTP	/rest/quickreload/latest/7864329?
			200	HTTP	/rest/quickreload/latest/7274906?
			200	HTTP	/rest/quickreload/latest/7864329?
			200	HTTP	/rest/mywork/latest/status/notifica
			200	HTTP	/rest/mywork/latest/status/notifica

The context menu items are:

- Decode Selected Sessions
- AutoScroll Session List
- Copy
- Save
- Remove
- Comment... (M)
- Mark
- Replay
- Select
- Compare (Ctrl+W)
- COMETPeek
- Abort Session
- Clone Response
- Unlock For Editing (F2)
- Inspect in New Window... (Shift+Enter)
- StresStimulus Commands**
 - Create Test Case
 - Add to Test Case
 - Remove from Test Case (Ctrl+Del)
 - Show/Hide Dependent
 - Mark Selected Sessions as Primary
 - Mark Selected Sessions as Dependent
 - Show matching Test Case Session(s)
 - Compare with matching Test Case Session
- Properties... (Alt+Enter)